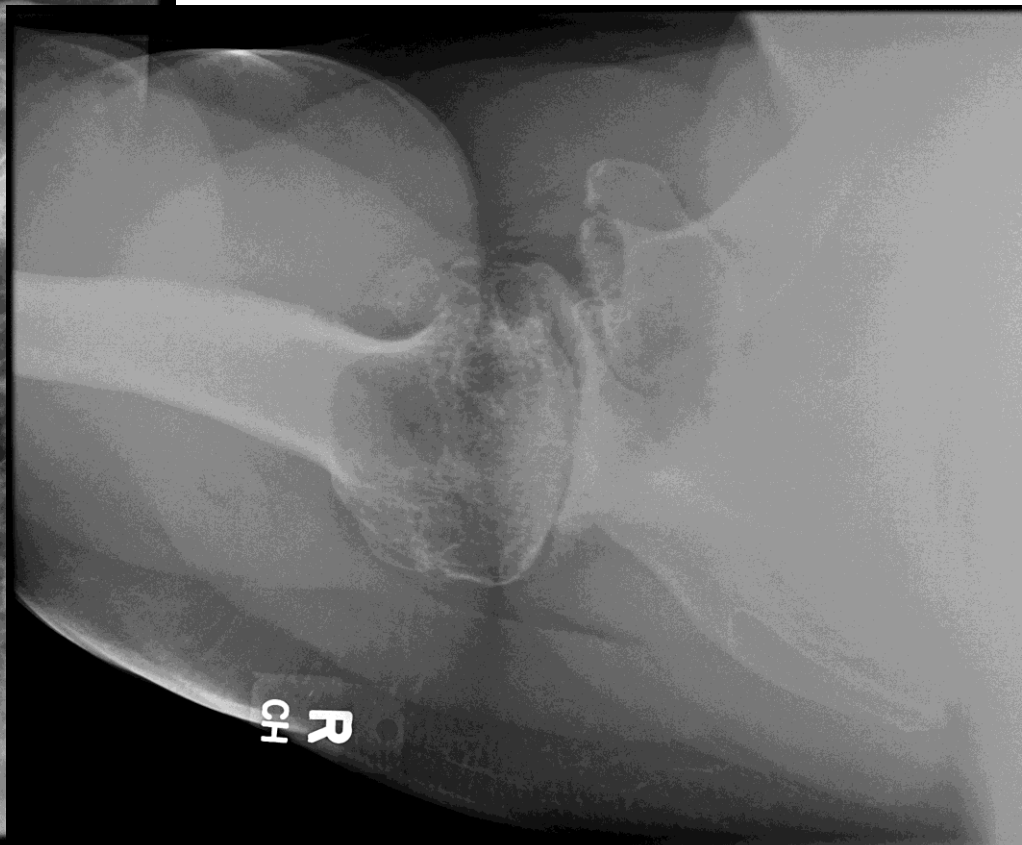


The first step in a successful journey is the plan for your trip....

....preoperative planning with 3-Dimensional information is the future of our patients' success with shoulder arthroplasty

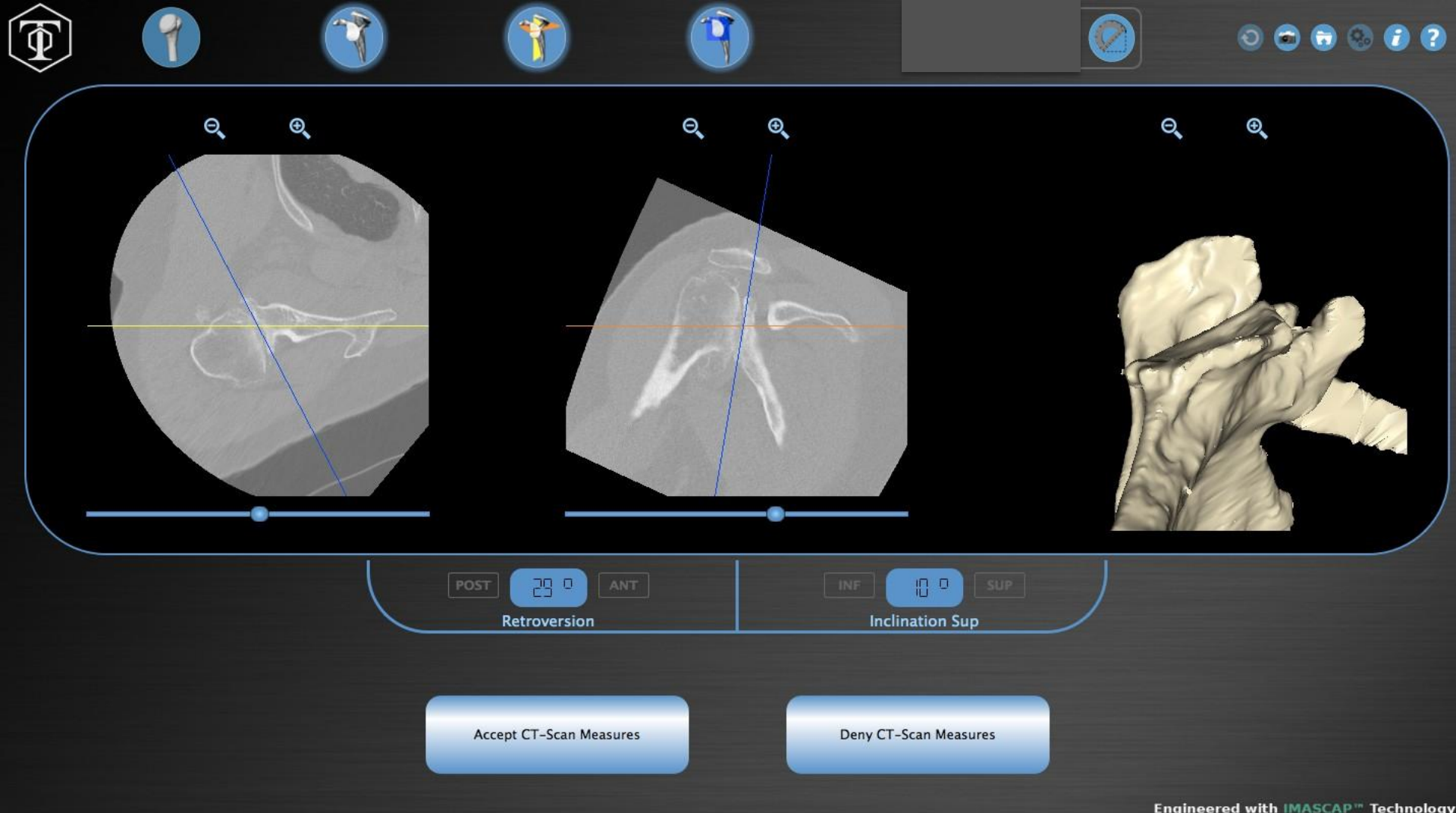
...the following is a case example.

JC : 62 yo man injured on the job: Pain = 3-8/10 & SSV = 35%
5'11" & 260LB.; AFF = PFF = 90°; AER = PER = 30°









29° Retroversion: Should we try to correct this and can we?

Glenoid

Orientation

30°

Direction

POST

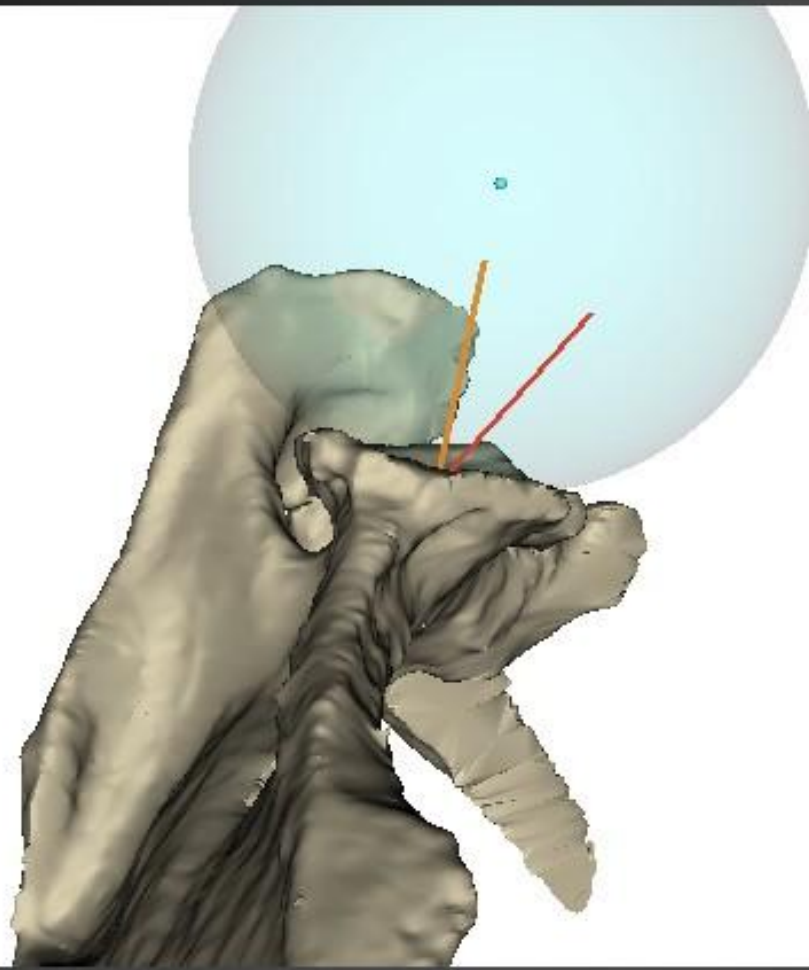
Humerus

Subluxation (%)

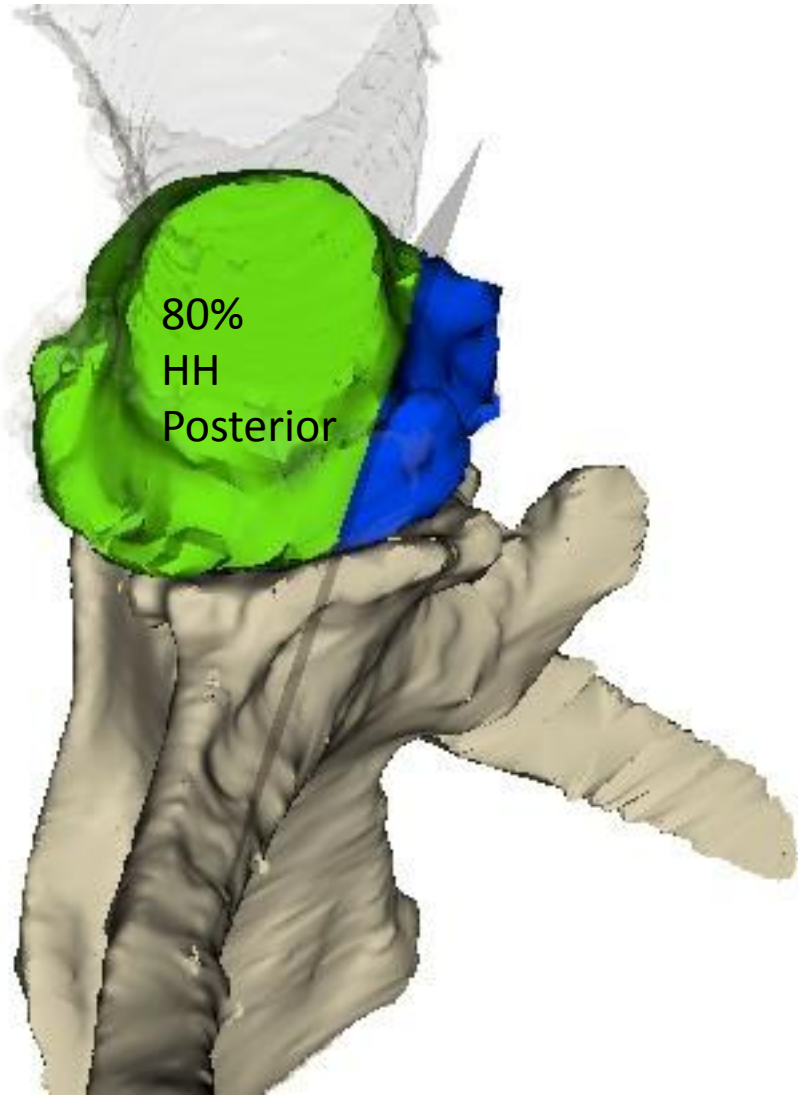
84

Direction

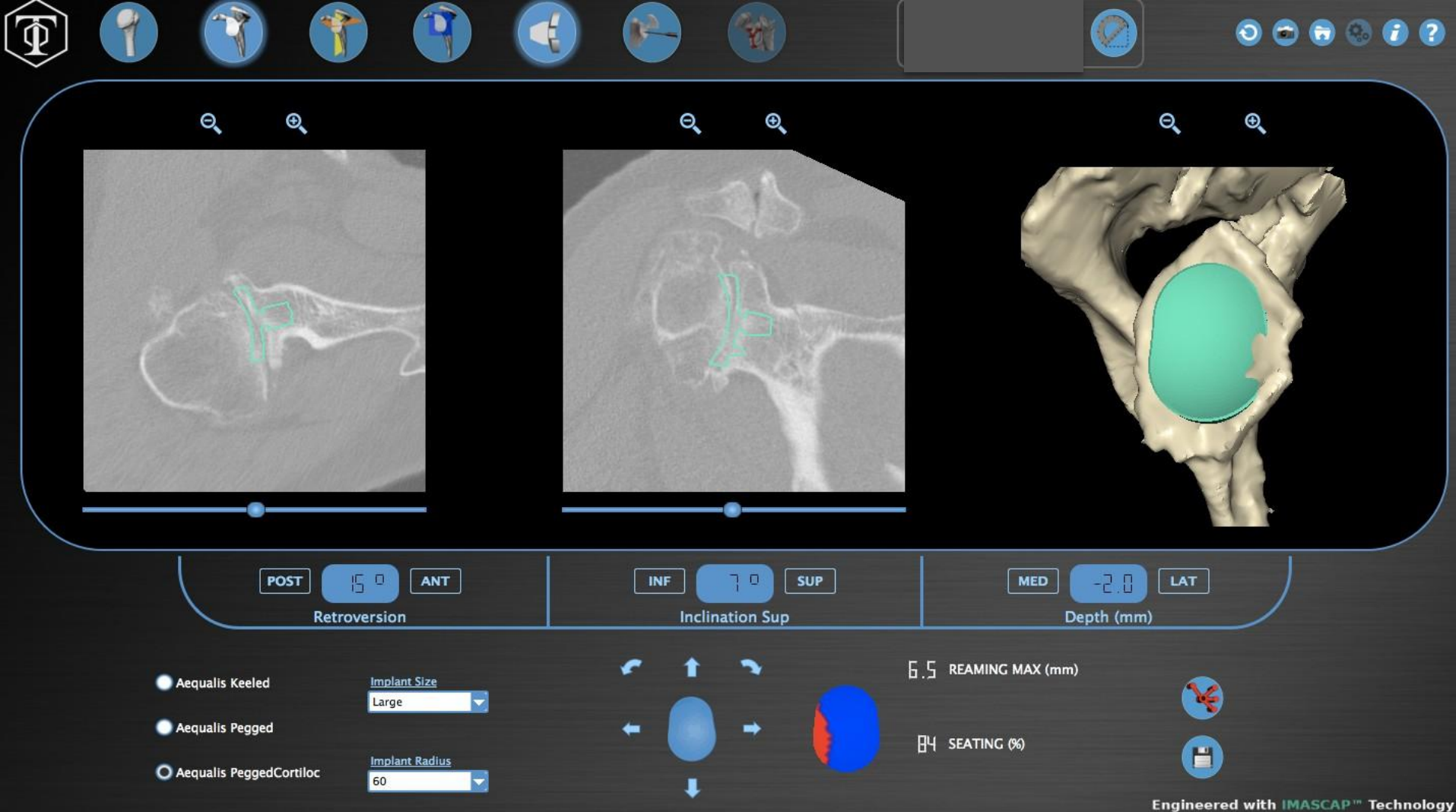
POST-SUP



84% of Humeral head is subluxated: Limit for correcXon is 80%



80%
HH
Posterior



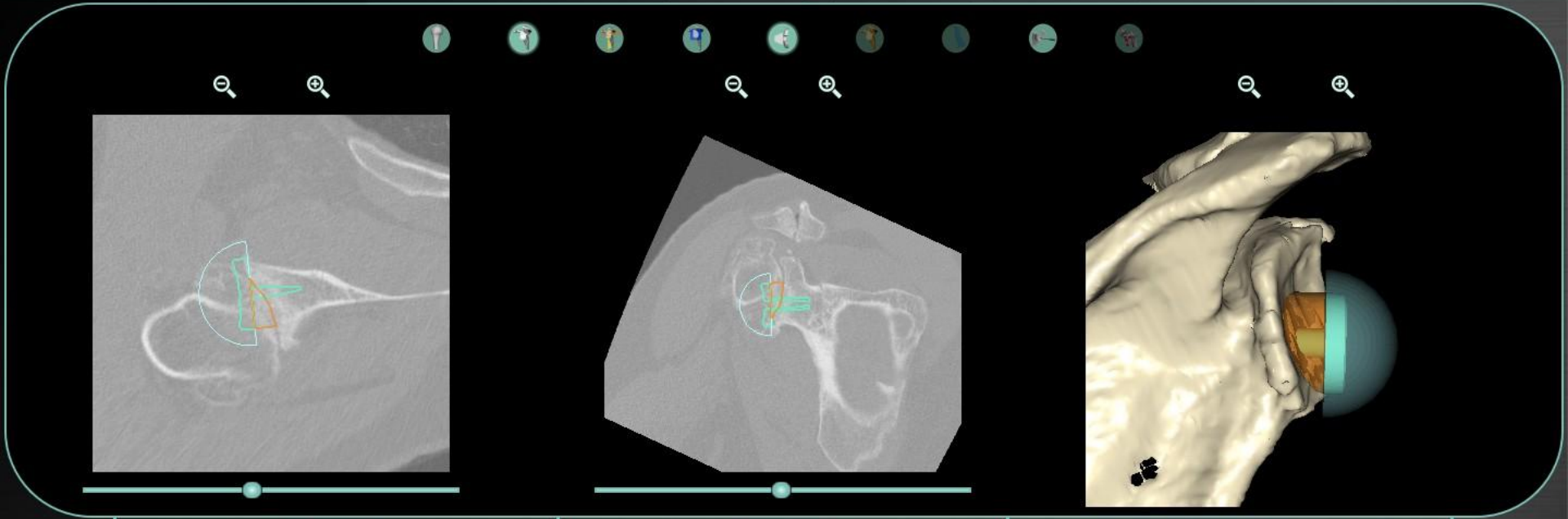
In order to achieve 84% seating of glenoid it is necessary to place the component in 15° retroversion with 6.5mm reaming of anterior glenoid: This will exceed recommended Retroversion maximum of 10° and will ream into cancellous glenoid bone...increased Risk of loosening!!



Glenoid

Humerus

Shoulder



POST ANT
Retroversion

INF 2° SUP
Inclination Inf

MED 5.9 LAT
Depth (mm)

- Aequalis Keeled
- Aequalis Pegged
- Aequalis PeggedCortiloc
- PAG
- Reversed

Peg Size
Long

Base Diam.
29

Glenosphere
Diam. 42 Type centered

Graft Type
Patient Spe. 11.9mm

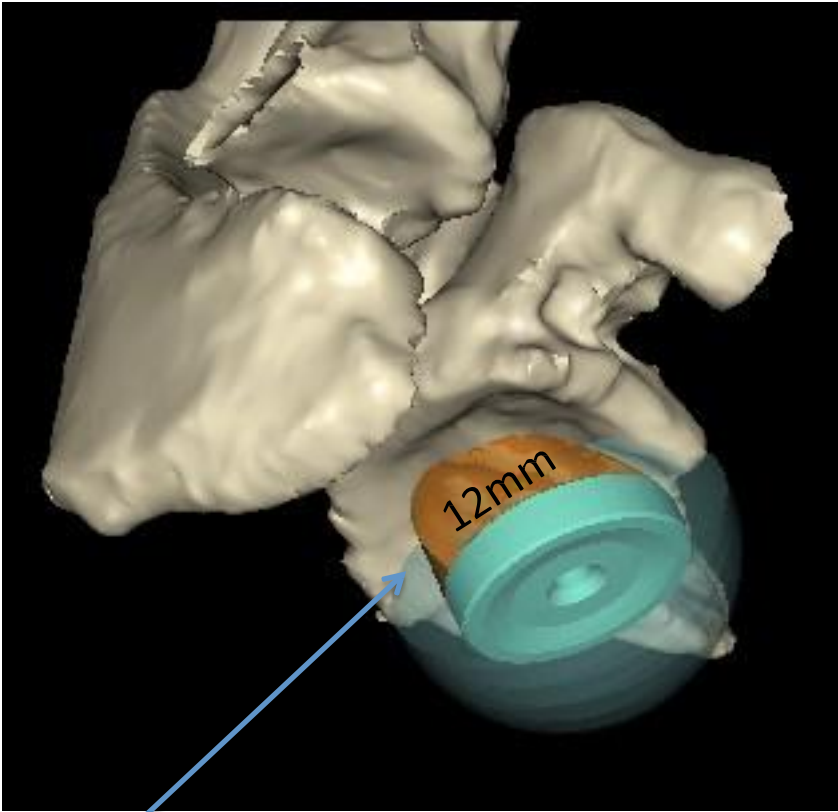


REAMING MAX (mm)

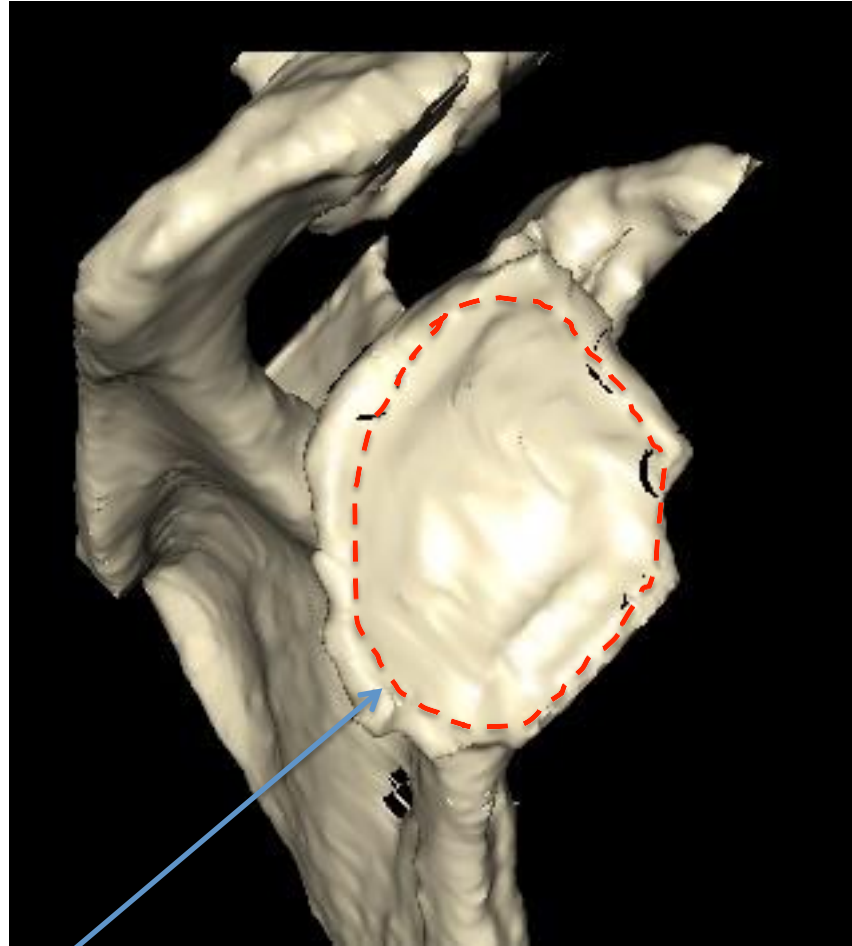
SEATING (%)



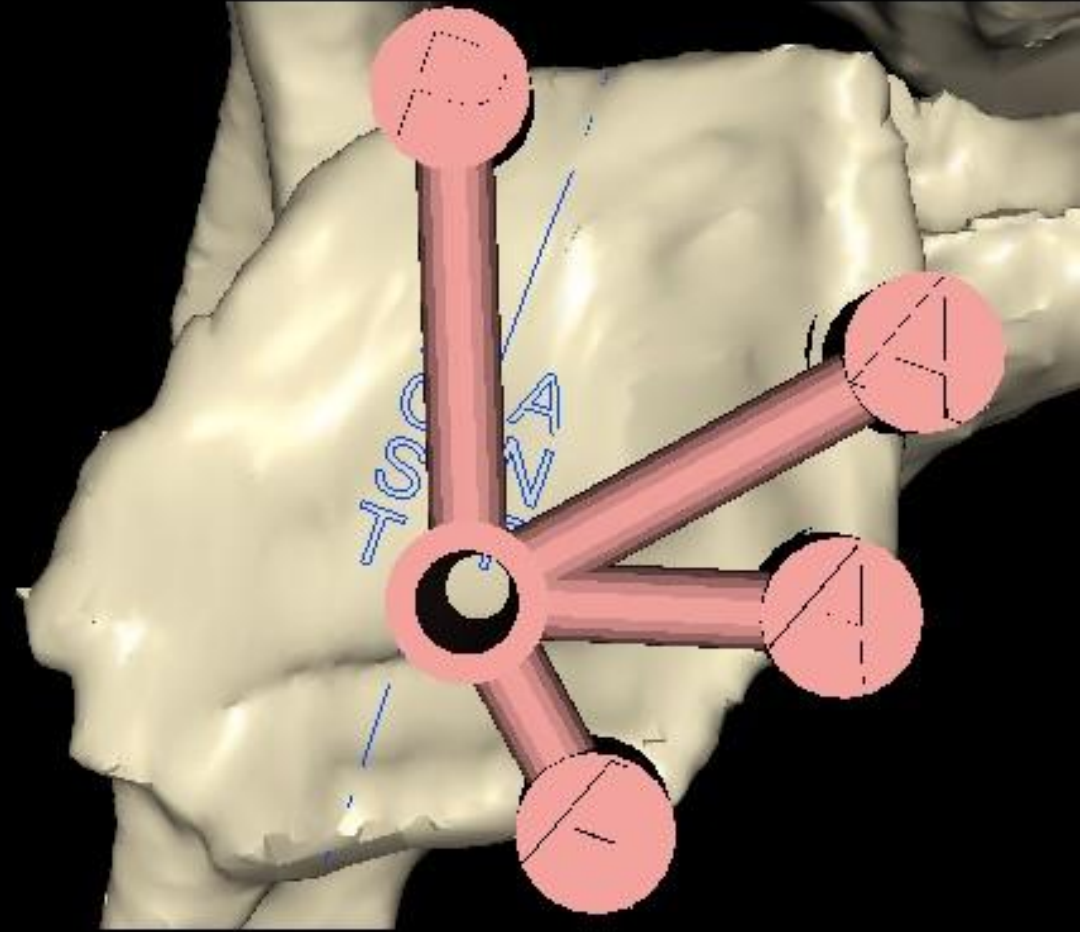
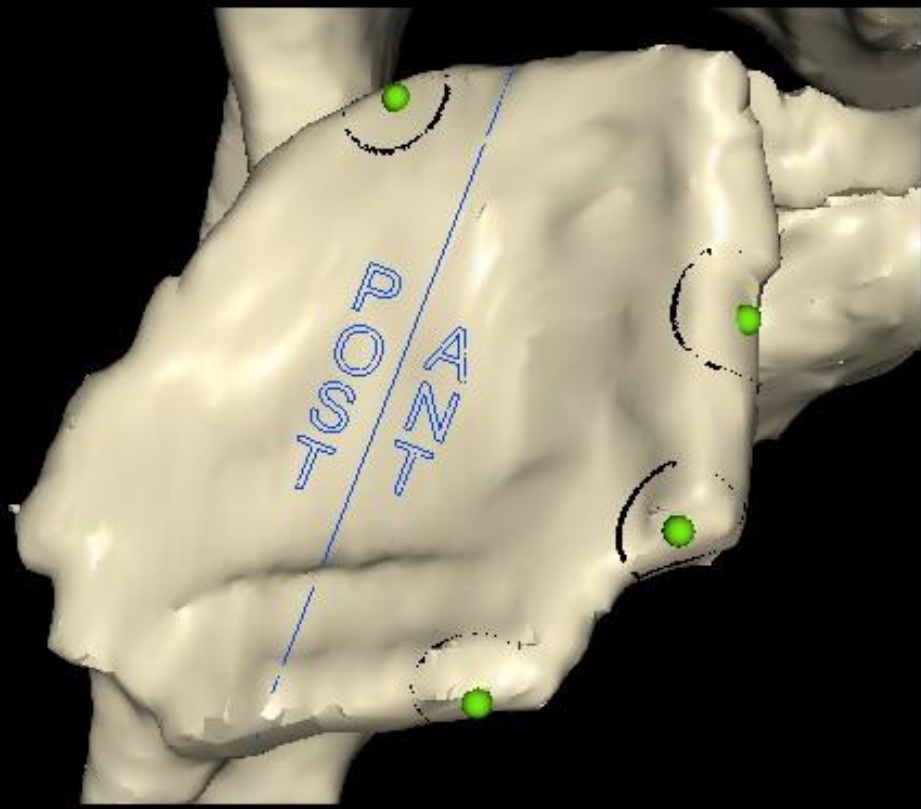
Reverse prosthesis would require 29mm baseplate with 6° retroversion and 2° inferior InclinaXon combined with paXent specific bone grab from Humeral head with maximum Diameter of about 12mm in order to correct posterior bone loss. Glenosphere 42mm Centered sphere.



Asymmetric bone grab



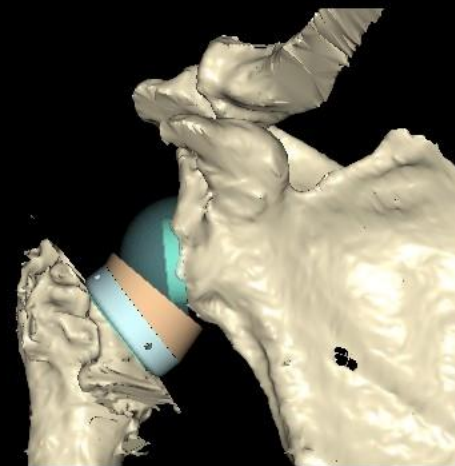
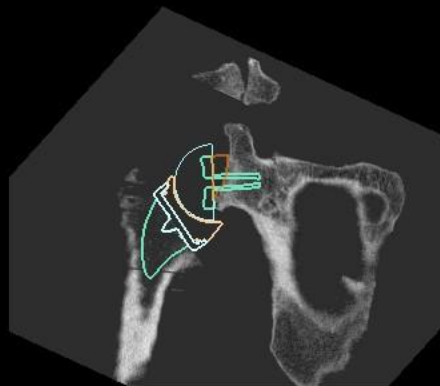
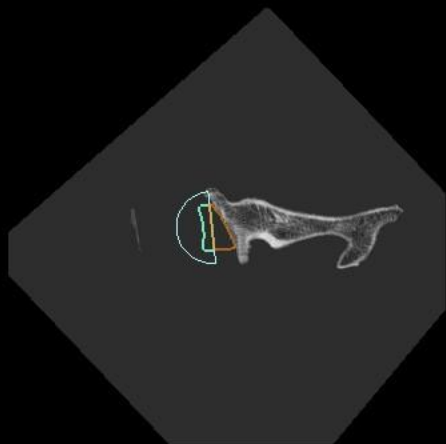
Removal of osteophytes



Glenoid

Humerus

Shoulder

TEST ENVIRONMENT
Not For Clinical Use

Glenoid Implant

Type	Reversed
Size	Long
Base Diam.	29
Graft	Patient Spe.
Glenosphere	42mm / centered

Humerus Implant

Stem

Type	PTC
Length	Standard
Inclination	B - 132.5°
Size	5 - 82mm

Tray

Offset	1.5
Thickness	0
Ecc. Index	4

PE Insert

Type	Standard
Diameter	42
Thickness	6
Tilt	B - 12.5°

Humeral Offset

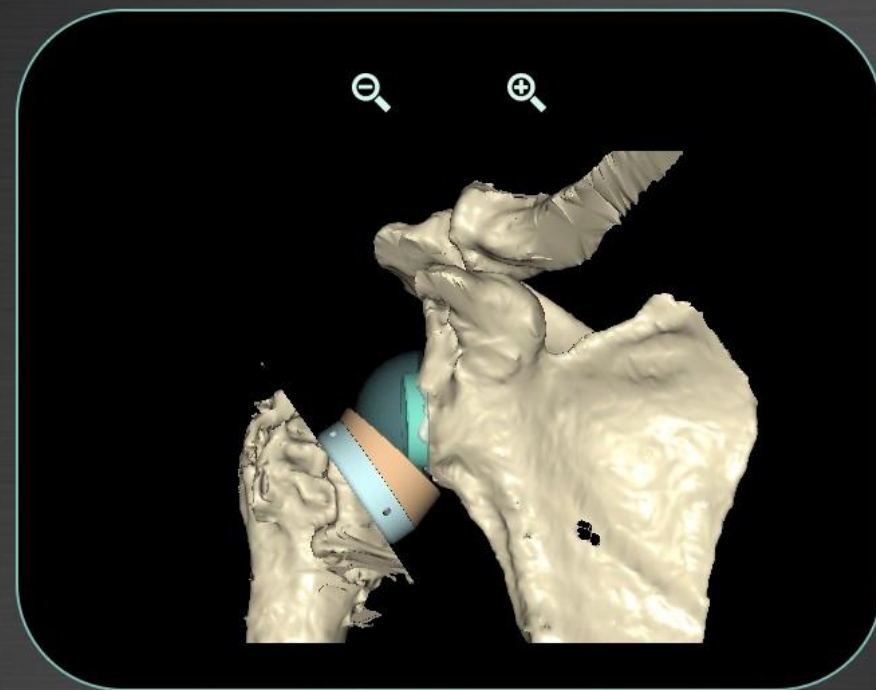
Lateral	20.49 mm
Anterior	11.79 mm
Inferior	10.29 mm

29mm baseplate with HH paXent-specific bone grab and 42mm glenosphere. Ascend-Flex Stem size 5mm with large eccentric tray and 6mm poly



RANGE OF MOTION

-	Adduction - Abduction	+	10 °	89 °
Lightbulb		Lightbulb		
-	Extension - Flexion	+	10 °	146 °
Lightbulb		Lightbulb		
-	Internal - External Rotation 0°	+	101 °	17 °
Lightbulb		Lightbulb		
-	Internal - External Rotation 90°	+	180 °	180 °
Lightbulb		Lightbulb		



Back to Planning

Achieved Arcs of moXon



Planning Long Journeys:

OBSTACLES, AND HOW TO OVERCOME THEM

ADVENTURESOFREECE

